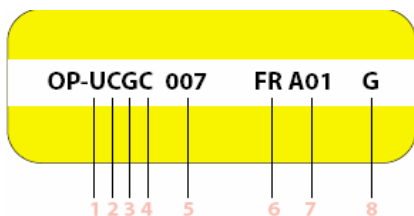


Optyma	Broj za narudžbu	Prijašnja oznaka	Broj za narudžbu	R404A		R134a		R407C		Optyma	
				Područje primjene	Snaga u W pri -10°C	Područje primjene	Snaga u W pri -10°C	Područje primjene	Snaga u W pri +5°C	Tip Kompresora	Broj za narudžbu
OP-MCZC030MTA02G	114X5024	HGZ018-5M	HGZ018S00G	-20/+5	1766	-15/15	1210	-15/10	3305	MTZ18JA5AVE	MTZ18-5VI
OP-MCZC030MTA02E	114X5012	HGZ018-4M	HGZ018S00E	-20/+5	1766	-15/15	1210	-15/10	3305	MTZ18JA4BVE	MTZ18-4VI
OP-MCZC030MTA02D	114X5000	bez prethodne verzije		-20/+5	1766	-15/15	1210	-15/10	3305	MTZ18JA4BVE	MTZ18-4VI
OP-MCZC038MTA02G	114X5025	HGZ022-5M	HGZ022S00G	-20/+5	2607	-15/15	1580	-15/10	4309	MTZ22JC5VE	MTZ22-5VI
OP-MCZC038MTA02E	114X5013	HGZ022-4M	HGZ022S00E	-20/+5	2607	-15/15	1580	-15/10	4309	MTZ22JC4AVE	MTZ22-4VI
OP-MCZC038MTA02D	114X5001	HGZ022-4T	HGZ022S00D	-20/+5	2607	-15/15	1580	-15/10	4309	MTZ22JC4AVE	MTZ22-4VI
OP-MCZC048MTA02G	114X5026	HGZ028-5M	HGZ028S00G	-20/+5	3491	-15/15	1986	-15/10	5781	MTZ28JE5VE	MTZ28-5VI
OP-MCZC048MTA02E	114X5014	HGZ028-4M	HGZ028S00E	-20/+5	3491	-15/15	1986	-15/10	5781	MTZ28JE4AVE	MTZ28-4VI
OP-MCZC048MTA02D	114X5002	HGZ028-4T	HGZ028S00D	-20/+5	3491	-15/15	1986	-15/10	5781	MTZ28JE4AVE	MTZ28-4VI
OP-MCZC054MTA02G	114X5027	HGZ032-5M	HGZ032S00G	-20/+5	3906	-15/15	2289	-15/10	6294	MTZ32JF5AVE	MTZ32-5VI
OP-MCZC054MTA02E	114X5015	HGZ032-4M	HGZ032S00E	-20/+5	3906	-15/15	2289	-15/10	6294	MTZ32JF4BVE	MTZ32-4VI
OP-MCZC054MTA02D	114X5003	HGZ032-4T	HGZ032S00D	-20/+5	3906	-15/15	2289	-15/10	6294	MTZ32JF4BVE	MTZ32-4VI
OP-MCZC060MTA02G	114X5028	HGZ036-5M	HGZ036S00G	-20/+5	4480	-15/15	2725	-15/10	7070	MTZ36JG5AVE	MTZ36-5VI
OP-MCZC060MTA02E	114X5016	HGZ036-4M	HGZ036S00E	-20/+5	4480	-15/15	2725	-15/10	7070	MTZ36JG4AVE	MTZ36-4VI
OP-MCZC060MTA02D	114X5004	HGZ036-4T	HGZ036S00D	-20/+5	4480	-15/15	2725	-15/10	7070	MTZ36JG4AVE	MTZ36-4VI
OP-MCZC068MTA02E	114X5017	HGZ040-4M	HGZ040S00E	-20/+5	5181	-15/15	3174	-15/10	8214	MTZ40JH4AVE	MTZ40-4VI
OP-MCZC068MTA02D	114X5005	HGZ040-4T	HGZ040S00D	-20/+5	5181	-15/15	3174	-15/10	8214	MTZ40JH4AVE	MTZ40-4VI
OP-MCZC086MTA02E	114X5018	HGZ050-4M	HGZ050S00E	-20/+5	6034	-15/15	3770	-15/10	9662	MTZ51HK4BVE	MTZ50-4VI
OP-MCZC086MTA02D	114X5006	HGZ050-4T	HGZ050S00D	-20/+5	6034	-15/15	3770	-15/10	9662	MTZ51HK4BVE	MTZ50-4VI
OP-MCZC096MTA02E	114X5019	bez prethodne verzije		-20/+5	6562	-15/15	4232	-15/10	10981	MTZ57HL4AVE	MTZ57-4VI
OP-MCZC096MTA02D	114X5007	bez prethodne verzije		-20/+5	6562	-15/15	4232	-15/10	10981	MTZ57HL4AVE	MTZ57-4VI
OP-MCZC108MTA02E	114X5020	HGZ064-4M	HGZ064S00E	-20/+5	7875	-15/15	4863	-15/10	12827	MTZ65HM4BVE	MTZ64-4VI
OP-MCZC108MTA02D	114X5008	HGZ064-4T	HGZ064S00D	-20/+5	7875	-15/15	4863	-15/10	12827	MTZ65HM4BVE	MTZ64-4VI
OP-MCZC121MTA02E	114X5021	bez prethodne verzije		-20/+5	8923	-15/15	5777	-15/10	14764	MTZ73HN4AVE	MTZ73-4VI
OP-MCZC121MTA02D	114X5009	bez prethodne verzije		-20/+5	8923	-15/15	5777	-15/10	14764	MTZ73HN4AVE	MTZ73-4VI
OP-MCZC136MTA02E	114X5022	HGZ080-4M	HGZ080S00E	-20/+5	10135	-15/15	6700	-15/10	16349	MTZ81HP4AVE	MTZ80-4VI
OP-MCZC136MTA02D	114X5010	HGZ080-4T	HGZ080S00D	-20/+5	10135	-15/15	6700	-15/10	16349	MTZ81HP4AVE	MTZ80-4VI
OP-MCZC171MTA02E	114X5023	HGZ100-4M	HGZ100S00E	-20/+5	11761	-15/15	7309	-15/10	18969	MTZ100HS4VE	MTZ100-4VI
OP-MCZC171MTA02D	114X5011	HGZ100-4T	HGZ100S00D	-20/+5	11761	-15/15	7309	-15/10	18969	MTZ100HS4VE	MTZ100-4VI
OP-MGZC215MTA02E	114X5073	HGZ125-4M	HGZ125S00E	-20/+5	15722	-15/15	9492	-15/10	25991	MTZ125HU4VE	MTZ125-4VI
OP-MGZC215MTA02D	114X5058	HGZ125-4T	HGZ125S00D	-20/+5	15722	-15/15	9492	-15/10	25991	MTZ125HU4VE	MTZ125-4VI
OP-MGZC242MTA02E	114X5074	HGZ144-4M	HGZ144S00E	-20/+5	17710	-15/15	11647	-15/10	28625	MTZ144HV4VE	MTZ144-4VI
OP-MGZC242MTA02D	114X5059	HGZ144-4T	HGZ144S00D	-20/+5	17710	-15/15	11647	-15/10	28625	MTZ144HV4VE	MTZ144-4VI
OP-MGZC271MTA02E	114X5075	HGZ160-4M	HGZ160S00E	-20/+5	19894	-15/15	13087	-15/10	32558	MTZ160HW4VE	MTZ160-4VI
OP-MGZC271MTA02D	114X5060	HGZ160-4T	HGZ160S00D	-20/+5	19894	-15/15	13087	-15/10	32558	MTZ160HW4VE	MTZ160-4VI



1. Primjena (temperature isparavanja)	
L	niske
M	srednje
U	univerzalne
4. Kondenzator	
C	Standard
5. Radni volumen	
012	12 cm ³
007	7.5 cm ³
6. Vrsta kompresora	
FR	MT = MTZ
SC	NT = NTZ

2. Izvedba	
C	Zrakom hlađeni agregat s jednim ventilatorom i jednim kompresorom
G	Zrakom hlađeni agregat s dva ventilatora i jednim kompresorom
7. Oprema	
A01	Osnovna verzija sa sakupljačem tekućine, 2 zaporna ventila, montažnom konzolom i priključnim bakrenim cijevima za KP ili ACB
A02	A01 + KP 17 WB univerzalni presostat
A04	A01 + KP 17 WB+FSA Kit + priključni kabel
8. Napon	
G	Kompresor 230V / 1~ / 50 Hz, ventilator 230V / 1~ / 50 Hz
D	Kompresor 400V / 3~ / 50 Hz, ventilator 400V / 3~ / 50 Hz
E	Kompresor 400V / 3~ / 50 Hz, ventilator 230V / 1~ / 50 Hz

3. Rashladni medij	
G	R134a
H	R404A / R507
C	R407C
Z	R134a / R404A R 507 / R407C

Optyma	Broj za narudžbu	Prijasnja oznaka	Broj za narudžbu	R404A		R404A		R134a		Optyma Tip Kompresora	Broj za narudžbu
				Područje primjene	Snaga u W pri -10°C	Područje primjene	Snaga u W pri -30°C	Područje primjene	Snaga u W pri -10°C		
OP-MCHC004TLA01G	114X2209	TL 4 DLX T2 Basic	114F2251	-15/+10	314	-	-	-	-	TL 4 DLX	195B0166
OP-MCHC006FRA01G	114X2317	FR 6 DLX T2 Basic	114F3252	-15/+10	511	-	-	-	-	FR 6 DLX	195B0032
OP-MCHC010SCA01G	114X2533	SC 10 DLX T2 Basic	114F5253	-20/+5	884	-	-	-	-	SC 10 DLX	195B0075
OP-MCHC012SCA01G	114X2541	SC 12 DLX T2 Basic	114F5254	-20/+5	1027	-	-	-	-	SC 12 DLX	195B0077
OP-MCHC015SCA01G	114X2649	SC 15 DLX T2 Basic	114F6270	-20/+5	1290	-	-	-	-	SC 15 DLX	195B0089
OP-MCHB018SCA01G	114X2757	bez prethodne verzije		-20/+5	1538	-	-	-	-	SC 18 MLX	slijedi
OP-LCHC004TLA01G	114X1209	TL 4 CLX T2 Basic	114F2256	-	-	-45/-5	141	-	-	TL 4 CLX	195B0021
OP-LCHC006FRA01G	114X1217	FR 6 CLX T2 Basic	114F2257	-	-	-45/-5	219	-	-	FR 6 CLX	195B0031
OP-LCHC008FRA01G	114X1325	FR 8,5 CLX T2 Basic	114F3258	-	-	-45/-5	268	-	-	FR 8,5 CLX	195B0038
OP-LCHC010SCA01G	114X1333	SC 10 CLX T2 Basic	114F3259	-	-	-35/-5	300	-	-	SC 10 MLX	195B0074
OP-LCHC012SCA01G	114X1441	SC 12 CLX T2 Basic	114F4260	-	-	-45/-5	429	-	-	SC 12 MLX	195B0076
OP-LCHC015SCA01G	114X1549	SC 15 CLX T2 Basic	114F5261	-	-	-45/-5	521	-	-	SC 15 MLX	195B0088
OP-LCHC018SCA01G	114X1557	SC 18 CLX T2 Basic	114F5262	-	-	-45/-5	610	-	-	SC 18 CLX	195B0066
OP-LCHC021SCA01G	114X1565	SC 21 CLX T2 Basic	114F5263	-	-	-45/-10	680	-	-	SC 21 CLX	195B0070
OP-UCGC003TLA01G	114X0105	TL 3 GX T2 Basic	114F1221	-	-	-	-	-35/+15	147	TL 3 GX	195B0006
OP-UCGC004TLA01G	114X0109	TL 4 GX T2 Basic	114F1222	-	-	-	-	-35/+15	182	TL 4 GX	195B0008
OP-UCGC005TLA01G	114X0113	TL 5 GX T2 Basic	114F1223	-	-	-	-	-35/+15	217	TL 5 GX	195B0011
OP-UCGC006FRA01G	114X0201	FR 6 GX T2 Basic	114F2224	-	-	-	-	-35/+10	294	FR 6 GX	195B0023
OP-UCGC007FRA01G	114X0217	FR 7,5 GX T2 Basic	114F2225	-	-	-	-	-35/+10	321	FR 7,5 GX	195B0024
OP-UCGC008FRA01G	114X0225	FR 8,5 GX T2 Basic	114F2226	-	-	-	-	-35/+10	376	FR 8,5 GX	195B0026
OP-UCGC010FRA01G	114X0233	FR 10 GX T2 Basic	114F2227	-	-	-	-	-35/+10	396	FR 10 GX	195B0027
OP-UCGC011FRA01G	114X0337	FR 11 GX T2 Basic	114F3228	-	-	-	-	-35/+5	510	FR 11 GX	195B0028
OP-UCGC012SCA01G	114X0341	SC 12 GX T2 Basic	114F3229	-	-	-	-	-35/+15	610	SC 12 GX	195B0050
OP-UCGC015SCA01G	114X0449	SC 15 GX T2 Basic	114F4230	-	-	-	-	-25/+15	731	SC 15 GX	195B0053
OP-UCGC018SCA01G	114X0557	SC 18 GX T2 Basic	114F5231	-	-	-	-	-25/+15	833	SC 18 GX	195B0059
OP-UCGC021SCA01G	114X0565	SC 21 GX T2 Basic	114F5232	-	-	-	-	-25/+15	981	SC 21 GX	195B0048
OP-LCHC048NTA02E	114X5037	LGZ022-4M	LGZ022S00E	-	-	-45/-10	1388	-	-	NTZ048A4LR1A	120F0001
OP-LCHC048NTA02D	114X5030	bez prethodne verzije		-	-	-45/-10	1388	-	-	NTZ048A4LR1A	120F0001
OP-LCHC068NTA02E	114X5038	LGZ028-4M	LGZ028S00E	-	-	-45/-10	2193	-	-	NTZ068A4LR1A	120F0002
OP-LCHC068NTA02D	114X5031	LGZ028-4T	LGZ028S00D	-	-	-45/-10	2193	-	-	NTZ068A4LR1A	120F0002
OP-LCHC096NTA02E	114X5039	LGZ040-4M	LGZ040S00E	-	-	-40/-10	2771	-	-	NTZ096A4LR1A	120F0003
OP-LCHC096NTA02D	114X5032	LGZ040-4T	LGZ040S00D	-	-	-40/-10	2771	-	-	NTZ096A4LR1A	120F0003
OP-LCHC108NTA02E	114X5040	LGZ044-4M	LGZ044S00E	-	-	-40/-10	3332	-	-	NTZ108A4LR1A	120F0004
OP-LCHC108NTA02D	114X5033	LGZ044-4T	LGZ044S00D	-	-	-40/-10	3332	-	-	NTZ108A4LR1A	120F0004
OP-LCHC136NTA02E	114X5041	LGZ050-4M	LGZ050S00E	-	-	-40/-10	4307	-	-	NTZ136A4LR1A	120F0005
OP-LCHC136NTA02D	114X5034	LGZ050-4T	LGZ050S00D	-	-	-45/-10	4307	-	-	NTZ136A4LR1A	120F0005
OP-LCHC215NTA02E	114X5042	LGZ088-4M	LGZ088S00E	-	-	-45/-10	6588	-	-	NTZ215A4LR1A	120F0006
OP-LCHC215NTA02D	114X5035	LGZ088-4T	LGZ088S00D	-	-	-45/-10	6588	-	-	NTZ215A4LR1A	120F0006
OP-LCHC271NTA02E	114X5043	LGZ100-4M	LGZ100S00E	-	-	-45/-10	8901	-	-	NTZ271A4LR1A	120F0007
OP-LCHC271NTA02D	114X5036	LGZ100-4T	LGZ100S00D	-	-	-45/-10	8901	-	-	NTZ271A4LR1A	120F0007

Rashladni učin pri:

A01 / A04: Vanjska temperatura = 32°C, Usisna temperatura u kompresor = 32 °C

Pothlađenje = 0K, frekvencija = 50Hz

A02: Vanjska temperatura = 32°C, Usisna temperatura u kompresor = 20 °C (LCHC)

Pothlađenje = 0K, frekvencija = 50Hz

Oprema:

A01: sa sabirnikom kapljavine, 2 zaporna ventila, montažnom konzolom i priključnim bakrenim cijevima za KP ili ACB

A02: A01 + KP 17 WB univerzalni presostat

A04: A01 + KP 17 WB+FSA Kit + priključni kabel